

JAN	MORNINGS 10.30AM (Unless stated)	MATINEES 1.30PM (Unless stated)	AFTERNOON 4.30PM (Unless stated)	EVENINGS 7.45PM (Unless stated)
Sat 5	The Grinch (PG)	The Nutcracker and The Four Realms (PG)	Bohemian Rhapsody (12A)	A Star Is Born (15)
Sun 6	The Nutcracker and The Four Realms (PG)	Fantastic Beasts: The Crimes of Grindelwald (12A)		
Tue 8	Parent & Baby: A Star Is Born (15)	A Star Is Born (15)		NT Encore: The Madness of George III (12A) 7pm
Wed 9		First Man (12A)	Bohemian Rhapsody (12A)	Fantastic Beasts: The Crimes of Grindelwald (12A)
Thu 10		A Star Is Born (15)	The Wife (15)	First Man (12A)
Fri 11		Bohemian Rhapsody (12A)		NT Encore: Allelujah! by Alan Bennett (15) 7pm
Sat 12	Wreck It Ralph 2: Ralph Breaks The Internet (PG)	Fantastic Beasts: The Crimes of Grindelwald (12A)	First Man (12A)	Bohemian Rhapsody (12A)
Tue 22			Disobedience (15)	NT Encore: Anthony and Cleopatra 7pm
Wed 23		Dementia Friendly: Singin' In The Rain (U)	A Star Is Born (15)	Widows (15)
Thu 24		Disobedience (15)	Bohemian Rhapsody (12A) sub	Peterloo (12A)
Fri 25		Widows (15)		
Sat 26	Spider-Man: Into The Spideverse (PG)			
Tue 29		Peterloo (12A)		NT Encore: The Tragedy of King Richard The Second 7pm
Wed 30		A Star Is Born (15)		
FEB	MORNINGS 10.30AM (Unless stated)	MATINEES 1.30PM (Unless stated)	AFTERNOON 4.30PM (Unless stated)	EVENINGS 7.45PM (Unless stated)
Sat 2	Smallfoot (PG)	Mary Poppins Returns (PG)	Wreck It Ralph 2: Ralph Breaks The Internet (PG)	Mary Poppins Returns (PG)
Tue 5	Parent & Baby: Fantastic Beasts... (12A)	The Old Man & The Gun (12A)	Peterloo (12A) sub	The Favourite (15)
Wed 6		Bohemian Rhapsody (12A)	The Favourite (15)	The Old Man & The Gun (12A)
Thu 7		Mary Poppins Returns (PG)		RSC Encore: Troilus and Cressida 7pm
Fri 8		The Favourite (15)		
Wed 20		Dementia Friendly: Oliver! (PG)	Mary Poppins Returns (PG)	Colette (15)
Sun 24	Relaxed: Mary Poppins Returns (PG)	Stan & Ollie		
Tue 26	Parent & Baby: Mary Poppins Returns (PG)	Colette (15)		NT Encore: I'm Not Running 7pm

HOW TO BOOK



Telephone:
01992 531 500



Online:
www.hertfordtheatre.com



In Person:
Hertford Theatre Box Office, The Wash, Hertford, SG14 1PS

Box Office: Tuesday- Saturday from 10am.
The Box Office closes at 5pm on non-performance days or 15mins after an evening performance has started. The Box Office is only open on a Sunday if there is an event on.

Café: Our cafe is open Tues- Sat from 10am until the start of the evening event or the end of an interval, if there is one. If there are events on a Sunday, our cafe is open to cover these.



Soft Subtitling

Soft Subtitling provides much more information than "normal" English subtitles and is especially useful for those with hearing impairments. Subtitled films will not have Audio Description.



24 Per Second

24 Per Second is Hertford Theatre's cine-club. No membership fees. Contact Serge on 24persecondhertford@gmail.com for more info.



Audio Description

Unless otherwise stated, all films listed have Audio Description, which enables people with visual impairment to enjoy the cinema. Please ask Box Office for a headset. We have limited availability of headsets. No audio description on Soft Subtitled Films.



Relaxed Screening

Specially designed for children with SEN and Autism. Enjoy the film without extra stimuli such as queuing, adverts/trailers. The lighting will be dimmed and the sound will be reduced and if you need a break, there is a chill-out space available.

CHILDREN'S FILM PARTIES AT HERTFORD THEATRE

Film Package includes:

- 3 hours of River Room Hire
- Tables, chairs and covering
- Cake Table, cake knife, plates and napkins
- Music system - with super speakers for a fab film experience
- Gigantic Screen
- Air Conditioning
- Popcorn and drink to enjoy whilst watching the film
- Party Lunch Box for after the film to include 5 items (to be chosen at time of booking)
- Cinema ticket style party invitation to download

£14.95 a head (minimum of 10)

For further information please contact our Front of House Manager Ben Cannell on 01992 515805 or email ben.cannell@hertfordtheatre.com

HOW TO FIND US

© CAR PARKING. For information on locations and charges please visit www.eastherts.gov.uk

herford CINEMA

WINTER FILM PROGRAMME

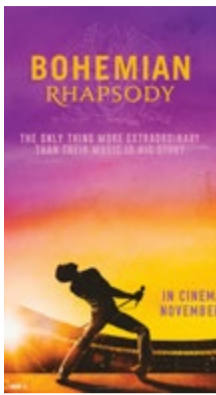
JANUARY - FEBRUARY 2019

BOX OFFICE: 01992 531 500
WWW.HERTFORDTHEATRE.COM

FILMS

Full price £8 Concession £6
(includes £1 booking fee)

Box Office: 01992 531 500
www.hertfordtheatre.com



BOHEMIAN RHAPSODY 12A

Saturday 5th January, 4.30pm
Wednesday 9th January, 4.30pm
Friday 11th January, 1.30pm
Saturday 12th January, 7.45pm
Thursday 24th January, 4.30pm (Soft Subtitles)
Wednesday 6th February, 1.30pm
Director: Bryan Singer (2hr 14min)
Stars: Rami Malek
A foot-stomping celebration of Queen, their music and their extraordinary lead singer Freddie Mercury. Follow the story leading up to Queen's legendary appearance at the Live Aid (1985) concert. (No Audio Description available)



A STAR IS BORN 15

Saturday 5th January, 7.45pm
Tuesday 8th January, 1.30pm
Thursday 10th January, 1.30pm
Wednesday 23rd January, 4.30pm
Wednesday 30th January, 1.30pm
Director: Bradley Cooper (2hr 16min)
Stars: Lady Gaga, Bradley Cooper
A musician helps a young singer find fame, even as age and alcoholism send his own career into a downward spiral.



FIRST MAN 12A

Wednesday 9th January, 1.30pm
Thursday 10th January, 7.45pm
Saturday 12th January, 4.30pm
Director: Damien Chazelle (2h 21min)
Stars: Ryan Gosling, Claire Foy
A look at the life of the astronaut, Neil Armstrong, and the legendary space mission that led him to become the first man to walk on the Moon on July 20, 1969.



FANTASTIC BEASTS: THE CRIMES OF GRINDELWALD 12A

Wednesday 9th January, 7.45pm
Director: David Yates (2hr 14min)
Stars: Eddie Redmayne
The second instalment of the "Fantastic Beasts" series set in J.K. Rowling's Wizarding World featuring the adventures of Newt Scamander.



THE WIFE 15

Thursday 10th January, 4.30pm
Director: Bjorn Runge (1hr 40min)
Stars: Glenn Close, Jonathan Pryce
A wife questions her life choices as she travels to Stockholm with her husband, where he is slated to receive the Nobel Prize for Literature.



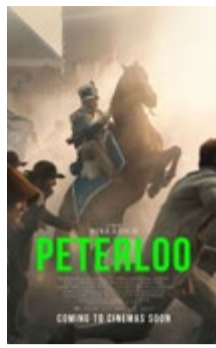
DISOBEDIENCE 15

Tuesday 22nd January, 4.30pm
Thursday 24th January, 1.30pm
Director: Sebastián Lelio (1hr 54min)
Stars: Rachel Weisz, Rachel McAdams
A woman returns to the Orthodox Jewish community that shunned her for her attraction to a female childhood friend. Once back, their passions reignite as they explore the boundaries of faith and sexuality.



WIDOWS 15

Wednesday 23rd January, 7.45pm
Friday 25th January, 1.30pm
Director: Steve McQueen (2hr 9min)
Stars: Viola Davis, Michelle Rodriguez, Liam Neeson
Set in contemporary Chicago, amidst a time of turmoil, four women with nothing in common except a debt left behind by their dead husbands' criminal activities, take fate into their own hands, and conspire to forge a future on their own terms.



PETERLOO 12A

Thursday 24th January, 7.45pm
Tuesday 29th January, 1.30pm
Tuesday 5th February, 4.30pm (Soft Subtitles)
Director: Mike Leigh (2hr 34min)
Stars: Rory Kinnear, Maxine Peake
The story of the 1819 Peterloo Massacre where British forces attacked a peaceful pro-democracy rally in Manchester. The Peterloo Massacre was a defining moment in British democracy, playing a significant role in the founding of The Guardian newspaper.



MARY POPPINS RETURNS PG

Saturday 2nd February, 7.45pm
Thursday 7th February, 1.30pm
Director: Rob Marshall
Stars: Emily Blunt, Meryl Streep, Colin Firth
A grown-up Jane and Michael Banks, along with Michael's three children, are visited again by Mary Poppins, after a personal loss. Through her unique skills, she helps the family rediscover the joy of life!



THE OLD MAN & THE GUN 12A

Tuesday 5th February, 1.30pm
Wednesday 6th February, 7.45pm
Director: David Lowery (1hr 33min)
Stars: Robert Redford, Sissy Spacek
Based on the true story of Forrest Tucker and his escape from San Quentin at the age of 70 to an unprecedented string of heists that confounded authorities and enchanted the public.



THE FAVOURITE 15

Tuesday 5th February, 7.45pm
Wednesday 6th February, 4.30pm
Friday 8th February, 1.30pm
Director: Yorgos Lanthimos
Stars: Olivia Colman, Emma Stone, Rachel Weisz
In early 18th century England, a frail Queen Anne occupies the throne and her close friend Lady Sarah governs the country in her stead. But when Abigail, a new servant arrives, her burgeoning friendship with the Queen gives her a chance to fulfil her ambitions and no woman, man, politics or rabbit will stand in her way!



COLETTE 15

Wednesday 20th February, 7.45pm
Tuesday 26th February, 1.30pm
Director: Wash Westmoreland (1hr 51min)
Stars: Keira Knightley, Eleanor Tomlinson, Dominic West
A Parisian writer convinces his wife to ghost-write for him, but when her novels become bestselling sensations, Colette must fight for creative ownership and overcome societal constraints, revolutionizing literature, fashion and sexual expression. (No Audio Description available)



STAN & OLLIE

Sunday 24th February, 1.30pm
Director: Jon S. Baird (1hr 37min)
Stars: John C. Reilly, Steve Coogan
The heart-warming story of Laurel and Hardy, the world's most famous comedy duo as they embark on of what would become their triumphant farewell tour - a gruelling variety hall tour of post-war Britain. (No Audio Description available)

FAMILY FILMS

All tickets £5 (includes £1 booking fee)



THE GRINCH PG

Saturday 5th January, 10.30am
A grumpy Grinch plots to ruin Christmas. Duration: 1hr 30mins



THE NUTCRACKER AND THE FOUR REALMS PG

Saturday 5th January, 1.30pm
Sunday 6th January, 10.30am
Be transported into the magical world of The Nutcracker! Duration: 1hr 39mins



FANTASTIC BEASTS: THE CRIMES OF GRINDELWALD 12A

Sunday 6th January, 1.30pm
Saturday 12th January, 1.30pm
Wednesday 20th February, 10.30am
The second instalment of the "Fantastic Beasts" series set in J.K. Rowling's Wizarding World featuring the adventures of Newt Scamander. Duration: 2hr 14mins



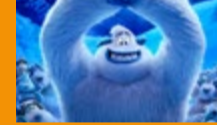
WRECK-IT RALPH 2: RALPH BREAKS THE INTERNET PG

Saturday 12th January, 10.30am
Saturday 2nd February, 4.30pm
Six years after the events of "Wreck-It Ralph", Ralph and Vanellope, now friends, discover a Wi-Fi router in their arcade, leading them into a new adventure. Duration: 1hr 52mins



SPIDER-MAN: INTO THE SPIDER-VERSE LIKELY TO BE PG

Saturday 26th January, 10.30am
Spider-Man crosses parallel dimensions and teams up with the Spider-Men of those dimensions to stop a threat to all reality. Duration: approx. 2hrs



SMALLFOOT PG

Saturday 2nd February, 10.30am
A Yeti is convinced that the elusive creatures known as "humans" really do exist. Duration: 1hr 36mins



MARY POPPINS RETURNS PG

Saturday 2nd February, 1.30pm
Wednesday 20th February, 4.30pm
Sunday 24th February, 10.30am (Relaxed)
Decades after her original visit, the magical nanny returns to help the Banks siblings and Michael's children through a difficult time in their lives. Duration: approx. 2hrs

DEMENTIA FRIENDLY SCREENINGS

Everyone is welcome to our new dementia friendly films, but they are specifically designed for those who are living with dementia and their family/carers. Tickets are £5 and a carer goes free. Tea, coffee and biscuits included. For more info, email emma.parlow@hertfordtheatre.com or chat to our Box Office! Bookings via 01992 531500 or in person only. Not online.

SINGIN IN THE RAIN U

Wednesday 23rd January, 1.30pm
Directors: Stanley Donen, Gene Kelly
Stars: Gene Kelly, Debbie Reynolds
A silent film production company and cast make a difficult transition to sound. Duration: 2hrs

OLIVER! PG

Wednesday 20th February, 1.30pm
Director: Carol Reed
Stars: Mark Lester, Ron Moody, Oliver Reed
Young orphan Oliver Twist runs away and meets a group of boys trained to be pickpockets by an elderly mentor. Duration: 2h 50min

PARENT & BABY

Babies under 18 months are welcome at these screenings. We leave the lights slightly on and the volume turned down a bit for a more baby-friendly environment. No need to leave if baby needs feeding or soothing. Plus- it's a great way to meet other local parents with children of a similar age.

A STAR IS BORN 15
Tuesday 8th January 10.30am

FANTASTIC BEASTS: CRIMES OF GRINDELWALD 12A
Tuesday 5th February, 10.30am

MARY POPPINS RETURNS PG
Tuesday 26th February, 10.30am

LIVE ENCORE SCREENINGS



NT ENCORE: THE MADNESS OF GEORGE III 12A

Tuesday 8th January, 7pm
Starring Olivier Award-winner Mark Gatiss in the title role. 210min



NT ENCORE: ALLELUJAH! BY ALAN BENNETT 15

Friday 11th January, 7pm
'just what the doctor ordered' (Daily Telegraph). Strong language throughout. 155min



NT ENCORE: ANTHONY AND CLEOPATRA

Tuesday 22nd January, 7pm
Ralph Fiennes and Sophie Okonedo play the famous fated couple. Suitable for an adult audience 210min

Full price £15
£11 for school groups (includes £1 booking fee)



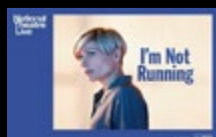
NT ENCORE: THE TRAGEDY OF KING RICHARD THE SECOND

Tuesday 29th January, 7pm
Simon Russell Beale plays Shakespeare's Richard II. Suitable for an adult audience 150min



RSC ENCORE: TROILUS AND CRESSIDA

Thursday 7th February, 7pm
Mad Max meets Ancient Greece in Shakespeare's play of love, war and celebrity. Suitable for an adult audience 210min



NT ENCORE: I' M NOT RUNNING

Tuesday 26th February, 7pm
An explosive new play by David Hare. Suitable for an adult audience 150min