



TECHNICAL SPECIFICATIONS

MAIN HOUSE TECHNICAL SPECIFICATION

LIGHTING

ETC ION lighting desk with 2x 20 fader bank **(NB this is an XP ION)**

126 ways of dimming supplied by LSC digital dimmer packs.

All outlets are 15 amp round pin.

4 independent hard power circuits located, one each, on the lighting bridge, fly floor, stage left and stage right – these are controlled from the control room only.

Lighting bar locations:

Fixed bar on Front of house bridge

Fixed Ceiling bar in auditorium

Fixed Side ceiling bars in auditorium

Motorised advance Truss

Motorised bars LX 1, 2, 3 and 4 on stage

LX perch positions stage left & right inside proscenium arch.

FOH side perch positions.

DMX points:

Control room

Sound position at rear of rake seating

All stage lighting bars and advance truss have DMX outlets on the bars

DMX in prompt corner and US/L

DMX buffer S/R

Houselights

Houselights are Multi-colour LED cobs and are DMX controllable. In addition they can be run independently of the lighting desk from the control room and prompt corner and sound position if required.

NB In the house setup, these are on universe 2.

Lighting Bridge

FOH lighting bridge in roof void accessed via spiral staircase from foyer.

Two LDR 1200MSR followspots with laser sights, fixed position.

Patch panel comprising XLR tie lines, comms outlets, Cat5 and Q light outlets.

DMX buffer servicing dimmer packs, auditorium lighting bar and projection position FOH.

Default Lighting Rig – (for hirers)

The default lighting rig will be rigged prior to your arrival either with the colour you have specified or with a general 4 colour wash if no colour has been specified for your show. Colour stock is included in the hire cost but check availability. If you require a special colour that we don't stock then you will have to supply this yourself or we can supplement a nearest colour.

If you are bringing in an external LD then the lanterns can be moved around the rig to suit your requirements BUT this will be need to be done in your hire time and must be returned to the default rig positions at the end of your get-out unless other arrangements have been previously agreed by the Technical Manager prior to your hire period.

Any other lighting equipment other than the default rig can be hired from our lighting stock; this includes the lighting for side booms.

We do offer an in-house lighting design package charged at **£150.00** which will include and covers:

Lighting design for your show to your exact specification

Rigging prior to your arrival (unless exceptional circumstances prevail such as your hire period starting straight after another hirers period finishing)

Colour as specified (if held in stock) or substituted if not.

Extra lighting (held in stock), unlimited profiles, PARcans, blinders, floor cans and pin spots (UV Cannons, Strobes and moving lights will still be chargeable).

Full side lighting on stage.

Returning all the lighting back to the default rig (after your hire period)

The list below details what is included in a standard hire.

Lantern	Detail	Power	Lamp	Quantity
Par 64 can	Long nose black	1KW	CP62	18
Cantata	Fresnel	1.2KW	T29	24
Cantata	PC	1.2KW	T29	10
Strand	Coda 4	500W	K1	4
Cantata	Profile 18/32	1.2KW	T29	8
Par 64 can	Short nose black	1KW	CP62	2
Par 64 can	Long nose chrome	1KW	CP62	10
Selecon	Pacific 14/35	1KW	GAB	12
Furze	Fresnel	1KW	T19	4
LDR	Followspots	1200MSR		2
Cantata	Barn doors			24
Cantata	B size gobo holder			6
Cantata	Iris			2
Pacific	A size gobo holder			4
	Gobos (various)			
All makes	Colour frames			To suit stock

As well as the above lantern stock also included are mains cables, DMX cables and extension leads. Grelcos and various adapter cables.

6x 2 metre lighting boom (boom only)

Other lighting and miscellaneous equipment for hire:

Equipment	Quantity	Price each (exc. VAT)	Price each (inc. VAT)
VL2000s moving lights	4	Currently not available	
UV cannons	2	£27.50/week (pair)	£33.00/week (pair)
Jem ZR22 DMX smoke machine inc. fluid	1	£41.13/week	£49.36/week
Point Source Hazer	1	£16.62/day £44.62/week	£19.94/day £53.54/week

SOUND

Martin Audio Blackline 5K sound system installed left and right of the prosc arch with JBL control 5 surround speakers.

JBL Control 5 located downstage as side fills.

The Sound desk is situated in the last row of the raked seating in the centre.

Controlled by:

Yamaha CL3 digital desk with 64 channels input via two Rio stage boxes, one situated stage left, the other situated stage right. 14 mixes total out plus main L&R

Sony minidisc player with auto pause facility

Two DAP audio CD players

Pulse MP3 player

The hire package for sound to include:

3 wired microphones either condenser or dynamic. (except AKG 747)

Microphone stands.

Microphone cabling and multicores to suit requirements

Standard stage foldback left and right.

Two wedge speakers for monitoring.

Radio microphones can be hired from us – please speak to the technical manager for details.

Lectern

(All damages to microphones and lost mic capsules and clips will be recharged at current market values).

Other sound equipment available:

Sennheiser radio microphones (total of 10 lapel/head mics and 4 handheld microphones)

	Day rate Excluding VAT	Day rate Including VAT	Weekly rate Excluding VAT	Weekly rate Including VAT
1 Pack	£31.50	£37.80	£78.75	£94.50
4 Packs	£127.63	£153.16	£274.75	£329.70
8 Packs	£215.25	£258.30	£537.25	£644.70
14 Packs	£405.17	£486.20	£918.75	£1102.50

If hiring more than four packs, you will need a Sound No. 2 (RF technician, not an operator). This can be booked in advance in 4 hour blocks – details available from the technical manager.

Other sound and AV equipment available to hire:

Item	Quantity Available	Price
SM58 microphones	4	On request
SM57 microphones	3	On request
Audio technical MB4000 condenser mics	2	On request
Sennheiser 845 vocal mics	2	On request
Sennheiser 602 bass microphone	1	On request
AKG747 condenser microphones	4	On request
DI boxes	2	On request
Portable PA system to run from either mains or battery with 2 speakers on stands	1	On request
RAT lit music stands	2	On request
Epsom 7000 lumen data projector	1	On request
Kodak carousel projector	1	On request
Yamaha electric piano	1	On request
Concert Grand piano (tuned to 442)	1	On request

CONTROL ROOM

Situated at the rear of the auditorium on upper level, access via a spiral staircase from the foyer.

The Lighting desk is situated in the control room along with the Cinema Projector and sound processing rack.

COMMUNICATIONS

Tecpro system installed for talkback with outstations in control room, lighting bridge, stage left, stage right, first and second fly floors and auditorium and various other positions. 6 headsets and beltpacks available. (2 sets for followspots are Beyer noise cancelling twin muff)

*Call system. Calls can be made from the prompt desk only to dressing rooms, under stage and green room and may linked through to front of house for announcements if required.

*An infrared hearing system for hard of hearing is installed in the main auditorium.

STAGE

Performing area 29'6" x 28' (9m x 8.5m).

Proscenium opening 29'6" (9m) wide x 4.6m high.

Stage height from Auditorium floor - 3'6" (1.1m).

Wing widths – 13' x 32' (4m x 10m) stage left, 6'6" x 13' (2m x 4m) stage right.

White plaster curved wall used as cyclorama.

Stage floor is semi-sprung maple wood suitable for all dance and painted black.

Harlequin surface available to hire (Price On Request).

Backstage crossover via dressing room corridor.

Access to orchestra pit is via basement and under stage.

Hydraulic Forestage can lower to form an Orchestra pit (accommodates 16 – 20 musicians) 2.6m x 9.14m. or raise up to stage level to give a larger performing area.

Stage masking is black serge legs and borders with Midstage and Upstage drawn Blacks

Prompt corner / SM desk is located Stage left.

Patch panels stage left and right for generic tie lines to sound position, control room and lighting bridge.

TV monitors in prompt corner for front vision, infrared and MD cameras.

Show relay in prompt corner.

16 way cue light master station.

Epsom data projector hanging point on LX4 for rear projection onto rear projection screen wired to switcher box on prompt desk.

Flying

Height to grid 41' (12.2m).

Maximum flying height 41' (12.2m).

4 onstage-motorised LX bars, SWL 250kg each bar.

2 motorised bars (one midstage & one upstage) with half tabs to form full blacks.

13 Counterweight sets, SWL 200kg.

5 Hemp sets, SWL 100kg.

Back projection screen (motorised) 12ft x 12ft - (3.66m sq.).

House tabs (brown) flown – fully counterweighted.

Safety curtain.

Cinema Projection screen furthest point downstage 9m x 4.6m

Stage power

Stage left 10 x 13A sockets

- 1 x 32A Ceeform single phase

Stage right RCD 60A 3 phase supply, split into outlets of:

*1 x 16A Ceeform single phase

*1 x 32A Ceeform single phase

*1 x 63A Ceeform single phase

*1 x 63A 3 phase Ceeform

*8 x 13A sockets

(We don't carry any adaptors for 3 phase power, adaptors available for single phase outlets).

Stage Equipment

4 Sico risers 6' x 6', height adjustable to either 18" or 24".

3 6' x 3' wooden rostra height 8".

Aluminium stage decking 2m x 1m – various height legs (available to hire)

Various heights of wooden treads to suit risers and stage height.

ACCESS EQUIPMENT

1 x Tallescope.

1 x 10 Rung Zarges ladders.

Aluminium extending ladders.

Step ladders.

DRESSING ROOMS

There are four carpeted dressing rooms, (2 large and 2 small), Dressing rooms 1, 2 and 3 are at stage level, dressing room 4 is on the first floor with two exits one down to stage left, the other down to stage right.

All dressing rooms have coded door locks for security.

All have wash basins and a toilet. Dressing room 4 has two toilets. Dressing room 3 also has a shower.

All have additional electric heaters and cooling fans in addition to general heating.

All have lit make-up mirrors and dressing rails.

All have show relay fitted and TV monitors to view stage.

AUDITORIUM

Rake seating in a bleacher retractable style.

13 Amp sockets around hall.

House Sound desk situated on the rear of the rake seating unit, provision can be made for a lighting desk next to the sound desk with the removal of 6 seats. (Our sound desk can be removed for touring desks to be located).

LOADING

Dock doors are stage left, 4.27m x 3.05m *or*

for ease via double doors into auditorium and onto the forestage lift – max SWL 3 tonnes.

PARKING

Access is from the main road via automatic barrier adjacent to the Weatherspoon's pub.

Parking is available for vehicles dropping off equipment only or vehicles that need to remain on site, all other vehicles must use the nearby public car park.

We can accommodate large trucks or a tour bus if required.

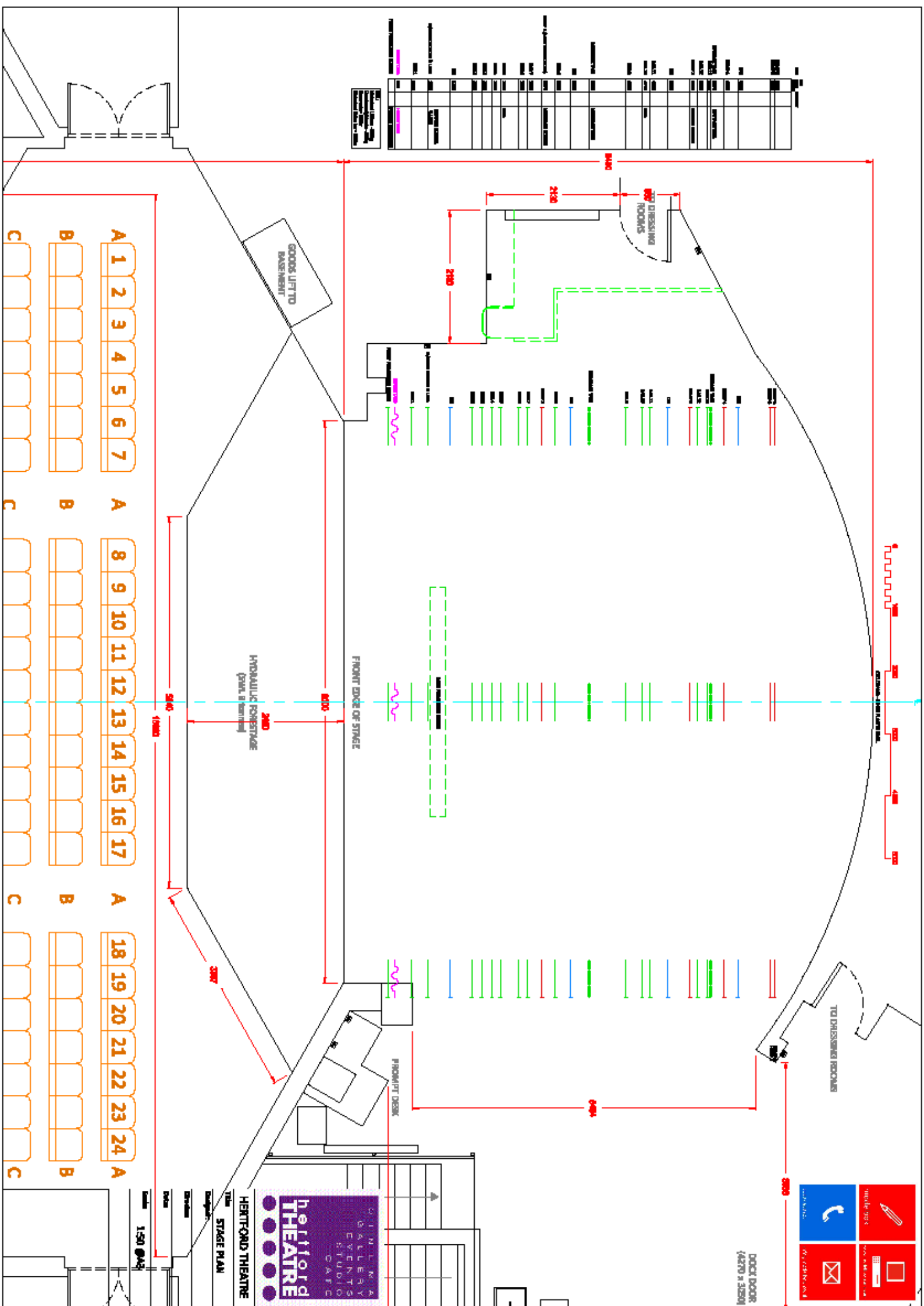
Spaces for disabled users available as space dictates.

There are no waiting time restrictions within our car park.

Notice to Hirers.

No backstage disabled facilities.

- **All stage lighting lanterns must be returned to our standard rig set up upon departure of get-out. Colour gels may be left in.**
- **Selecon Pacific lanterns on FOH lighting bridge must not be removed from the bridge without the consent of the technical manager or duty theatre technician.**
- **All cables must be neatly coiled and returned to stores.**
- **The sound desk is to be re-patched to its default settings before you depart.**
- **Our Radio microphone frequencies must not be altered as they are licenced.**
- **Please leave the stage and control room in a reasonably tidy condition.**
- **NOTE. Please take extra care of stage drapes as they can be quite easily ripped, and ALL damages (and subsequent repair) will be charged for.**



NO.	DESCRIPTION	UNIT	QUANTITY	REMARKS
1
2
3
4
5
6
7
8
9
10
11
12
13
14
15
16
17
18
19
20
21
22
23
24

A 1 2 3 4 5 6 7
 B
 C
 A 8 9 10 11 12 13 14 15 16 17
 B
 C
 A 18 19 20 21 22 23 24
 B
 C

HERTFORD THEATRE
 THE STAGE PLAN
 SCALE 1:50 (A4)
 DATE 15/04/14



DOCK DOOR
 (4270) x (3250)
 TO DRESSING ROOMS
 PROSCENIUM DESK
 FRONT EDGE OF STAGE
 HYDRAULIC FORESTAGE (open & tiered)
 GOODS LIFT TO BASEMENT
 DRESSING ROOMS
 TO DRESSING ROOMS

99	90
91	92
93	94

91	92
93	94
111	112
113	114

100	102
99	101
96	98
95	97

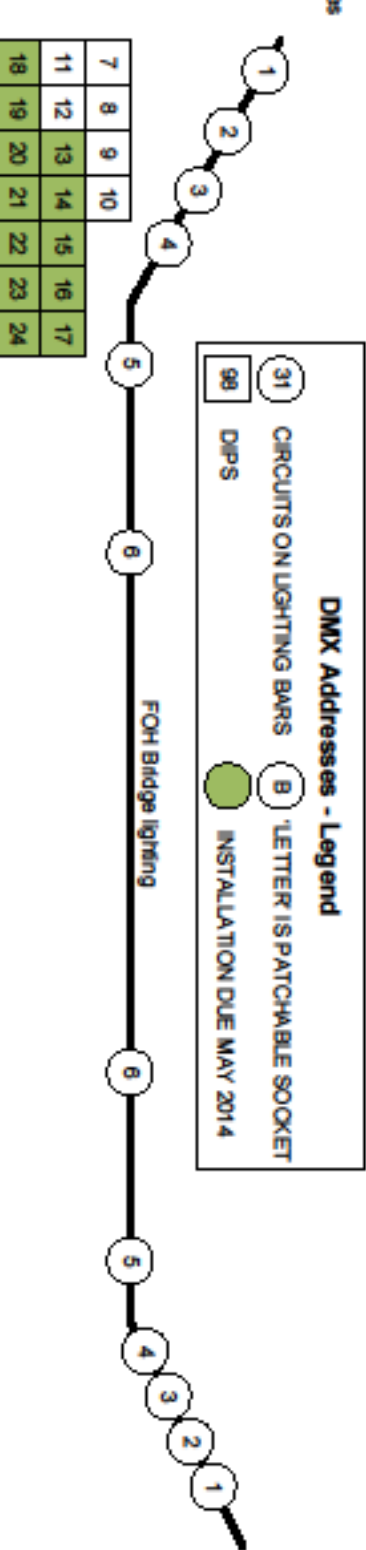
121	122
123	124
125	126

115	116
117	118
119	120

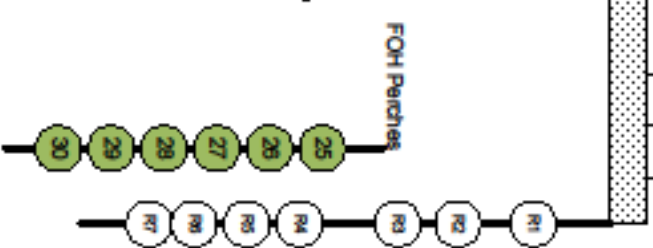
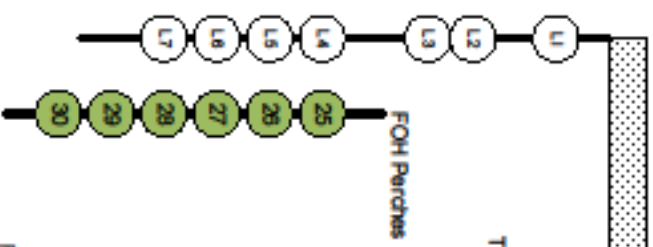


99	100
101	102
103	104
105	106
107	108
109	110
111	112
113	114

95	96
97	98



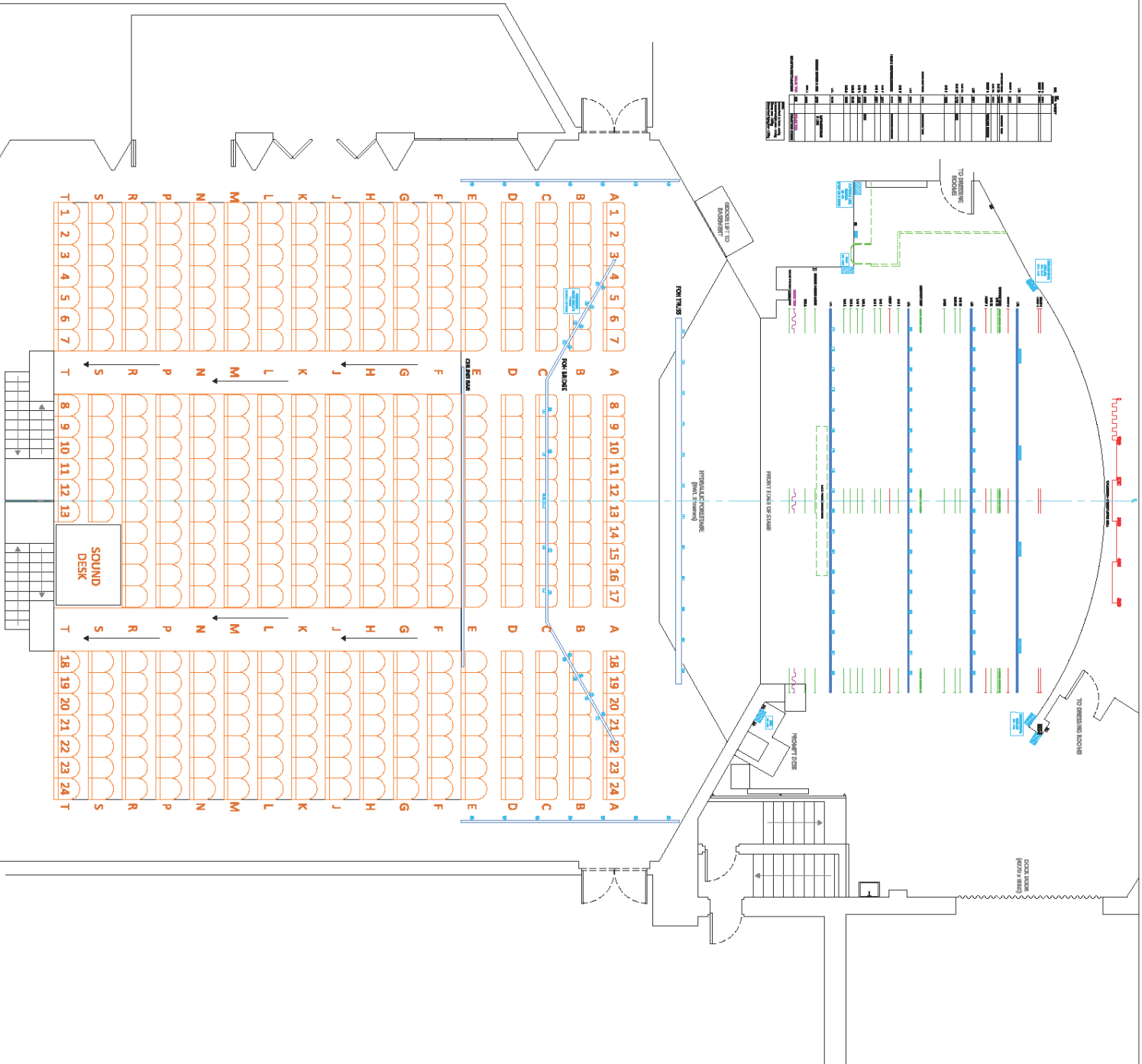
7	8	9	10
11	12	13	14
15	16	17	18
19	20	21	22
23	24		



Dimensions from Front of Fixed Stage	Inches	Feet & Inches	mm	Standard Rig
--------------------------------------	--------	---------------	----	--------------

Fire Curtain	23	1ft 11in	580	Fire Curtain
Projection Screen	35.5	2ft 11.1/2in	900	
House Tab C/W	41.5	3ft 5.1/2in	1050	House Tabs
C/W Bar 1	47.5	3ft 11.1/2in	1210	
Electric Winch Bar (3 rope set)	52	4ft 4in	1320	Legs & Border
Back Projection Screen	56.5	4ft 8.1/2in	1440	Back Projection Screen
LX 1	71.5	5ft 11.1/2in	1820	LX Bar
C/W Bar 2	82.5	6ft 10.1/2in	2100	
C/W Bar 3	89	7ft 5in	2280	
C/W Bar 4	95.25	7ft 11.1/4in	2420	
C/W Bar 5	101.5	8ft 5.1/2in	2580	Legs
C/W Bar 6	113.25	9ft 5.1/4in	2880	
C/W Bar 7	119.25	9ft 11.1/4in	3030	
Hemp	128	10ft 8in	3250	Border
C/W Bar 8	136.5	11ft 4.1/2in	3470	
LX 2	147	12ft 3in	3730	LX Bar
Traverse Winch	158.25	13ft 2.1/4in	4020	Mid Stage Tabs
C/W Bar 9	180	15ft 0in	4570	
C/W Bar 10	187	15ft 7in	4750	
C/W Bar 11	194.75	16ft 2.3/4in	4950	Legs
LX 3	210	17ft 6in	5330	Backlight Bar
Hemp	219.5	18ft 3.1/2in	5580	Border
C/W Bar 12	225.25	18ft 9.1/4in	5720	
C/W bar 13	232	19ft 4in	5890	
Traverse Winch	236.5	19ft 8.1/2in	6010	Up Stage Tabs
Hemp	241.5	20ft 1.1/2in	6130	
LX 4	251	20ft 11in	6380	Cyc LX Bar
Hemp (3 rope set)	271	22ft 7in	6880	
Hemp (3 rope set)	277	23ft 1in	7040	

HERTFORD THEATRE DOES NOT ACCEPT ANY LIABILITY OR ASSURE ANY CONSEQUENTUAL LOSS OR DAMAGE ARISING FROM ERRORS OR OMISSIONS IN THIS DOCUMENT OR FROM ANY DECISIONS OR ACTIONS TAKEN AS A RESULT OF RELIANCE ON THIS DOCUMENT. HERTFORD THEATRE IS PROVIDING THIS DOCUMENT AS A SERVICE TO THE CLIENT AND DOES NOT WARRANT THE ACCURACY, COMPLETENESS OR TIMELINESS OF THE INFORMATION CONTAINED HEREIN. HERTFORD THEATRE IS PROVIDING THIS DOCUMENT AS A SERVICE TO THE CLIENT AND DOES NOT WARRANT THE ACCURACY, COMPLETENESS OR TIMELINESS OF THE INFORMATION CONTAINED HEREIN.



Item	Quantity	Notes
1	1	...
2	1	...
3	1	...
4	1	...
5	1	...
6	1	...
7	1	...
8	1	...
9	1	...
10	1	...
11	1	...
12	1	...
13	1	...
14	1	...
15	1	...
16	1	...
17	1	...
18	1	...
19	1	...
20	1	...
21	1	...
22	1	...
23	1	...
24	1	...

0152 349933

model box

0152 349933

model box

HERTFORD THEATRE

THE: LIGHTING RIG

Designer: _____

Director: _____

Date: _____

Scale: 1:50 @ A1

STUDIO TECHNICAL SPECIFICATIONS

Temperature controlled environment.

Harlequin multi-purpose sprung floor suitable for dance and general purpose use.

Mirrored wall along one length of studio with double height ballet bars in front of.

Heated dressing room space available in the studio.

Zero 88 Illusion 120 lighting desk

63 AMP 3 phase Anytronics 24 channel dimmer patchable to 5 lighting bars each with six 15 Amp outlets per bar, configured in a box format with centre bar across width of studio.

4 lighting dips at floor level.

DMX at one end of the studio to tie into the dimmers.

Lighting stock consists of:

10x 650w Fresnels with barn doors

10x 600w PARnels with barn doors and interchangeable lenses for differing beam angles.

2 Strand SL 15/32 degree profile spots.

4 flood house light system.

Soundcraft spirit folio 16 channel desk

Portable twin CD player and iPod dock with small mixer for playback facilities.

JBL Control 5, four speaker system for all types of set-up from all round sound for in the round to end on end configuration.

Left and Right tie lines at one end of the studio to tie into the sound system.

Portable staging that can be configured to form tiered seating platforms or staging at varying heights.

100 black plastic chairs for use in the studio if required.

JVC Stereo multi input for general use.

CONTACT

Interim Technical Manager: Alex Johnston

Email alex.johnston@hertfordtheatre.com

Tel: 01992 515802



STAND SUSPENDED PROFILE



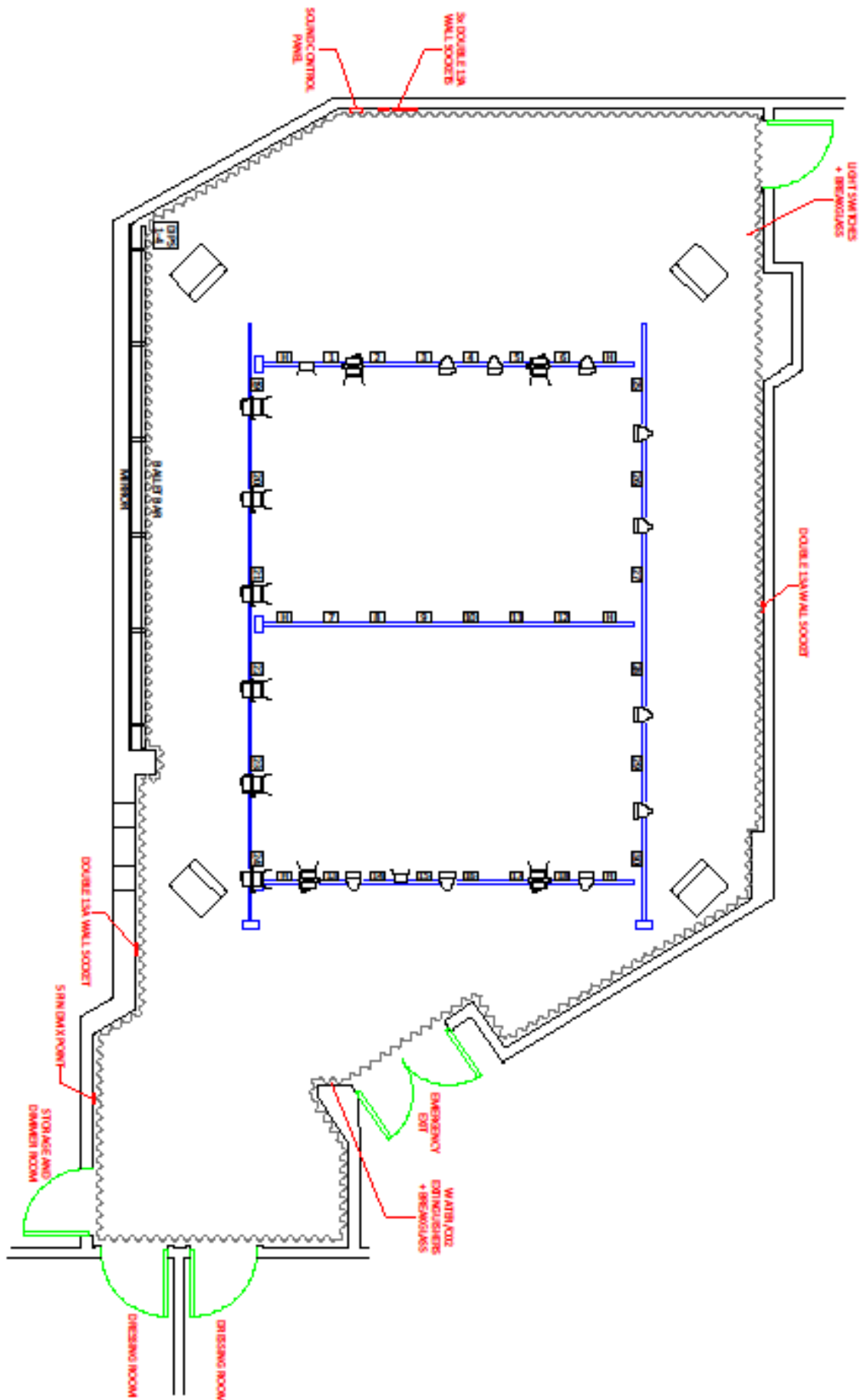
GRID PANEL



GRID FRESH



HOUSELIGHT FLOOR



TOWN CENTRE MAP

